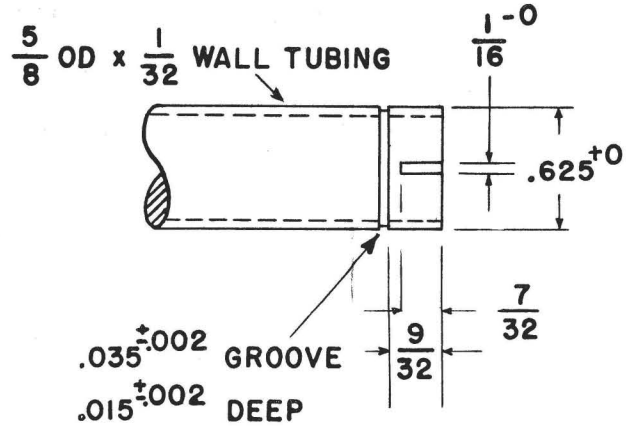
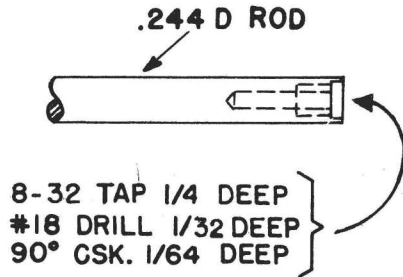


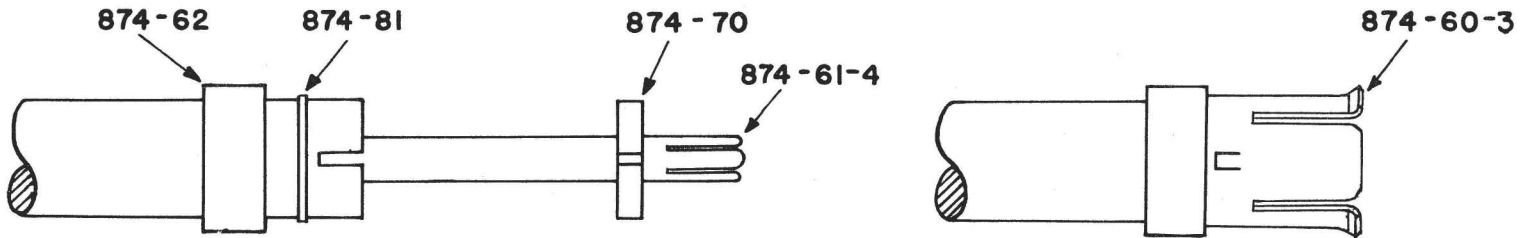
ASSEMBLY INSTRUCTIONS GENERAL RADIO TYPE 874-B BASIC CONNECTOR

Cut rod and tube to make ends flush, and machine as illustrated. If connectors are used on both ends of tube, 1/16 keyways should be oriented 90° apart.



Slide on coupling nut (874-62) and install snap ring (874-81) on tube end. Insert inner conductor (874-61-4) in insulating bead (874-70) and thread into rod end.

Align keyway in insulating bead (874-70) with keyway in tube end. Slip outer conductor (874-60-3) over bead and tube end so that key engages keyway, and thread up coupling nut (874-62).



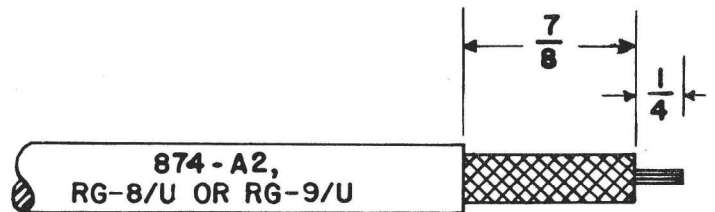
ASSEMBLY INSTRUCTIONS

GENERAL RADIO TYPE 874-C, -C8, or -C9 CABLE CONNECTOR

Remove cable jacket and insulation to expose braid and inner conductor to dimensions shown.

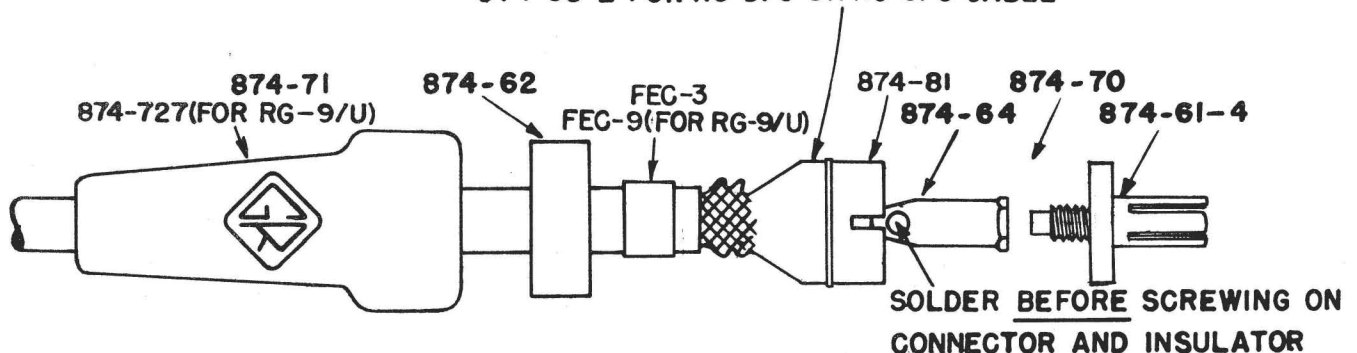
Slip on cord guard (874-71 or 874-727) using talc if necessary, coupling nut (874-62) and cable ferrule (FEC-3 or -9). Slide outer transition piece (874-63 or 874-63-2) under braid as far as possible. Slip inner transition piece (874-64) over inner cable conductor until end touches cable insulation; then solder. Install snap ring (874-81). Insert inner conductor (874-61-4) in insulating bead (874-70) and screw into inner transition

piece (874-64). CAUTION: Insulator will melt if inner conductor and insulating bead are screwed on before soldering cable.



874-63 FOR 874-A2 CABLE

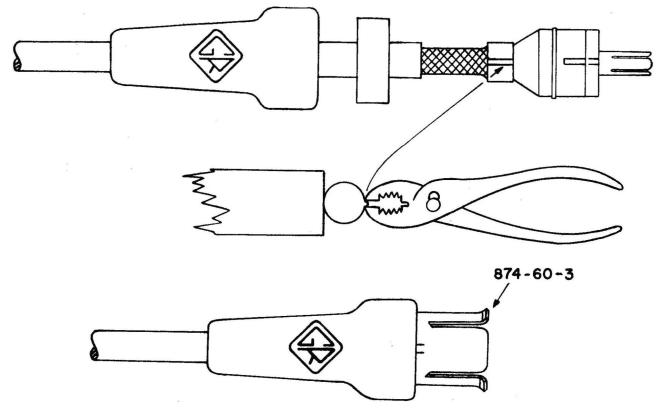
874-63-2 FOR RG-8/U OR RG-9/U CABLE



**ASSEMBLY INSTRUCTIONS GENERAL RADIO
TYPE 874-C, -C8, or -C9 CABLE CONNECTOR (Cont)**

Slide outer transition piece (874-63 or 874-63-2) up to insulating bead (874-70); align keyways, and arrange braid over small end. Cover with cable ferrule (FEC-3 or -9) and crimp in place. Crimping can be easily accomplished by holding ferrule against a sturdy surface and pinching and pushing simultaneously with a pair of ordinary gas pliers as illustrated. Thomas and Betts Type WT-218 Ferrule Crimping Tool can be used for crimping ferrules on 874-C and -C8 connectors. This tool is available from Thomas and Betts Co., Elizabeth, New Jersey.

Slip outer conductor (874-60-3) over bead (874-70) and outer transition piece so that keys engage keyways. Thread up coupling nut (874-62)*, and stretch rubber cord guard (874-71 or 874-727) over coupling nut (874-62).

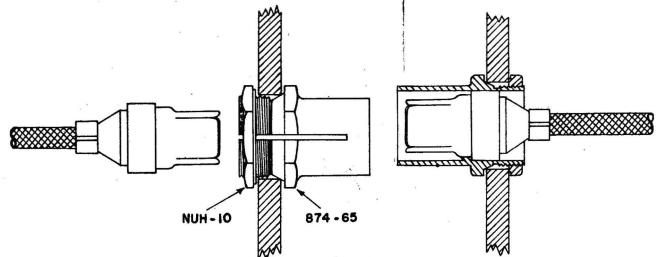


*Note: For minimum VSWR tightly wrap exposed portion of braid between jacket and ferrule with plastic tape before sliding rubber boot in place in order to keep braid in contact with dielectric.

**ASSEMBLY INSTRUCTIONS GENERAL RADIO
TYPE 874-P, -P8, -P9, -PC, -PC8 or -PC9 PANEL CONNECTOR**

Assemble connector to cable same as 874-C, 874-C8, or 874-C9 but less rubber cord guard. Mount panel adaptor (874-65 without cap, 874-211 with cap) through 15/16-inch clearance hole in panel, leaving nut (NUH-10) loose.

Slide connector assembly into panel adaptor until pierced key engages keyway in connector assembly. Clamp in place by tightening nut (NUH-10).

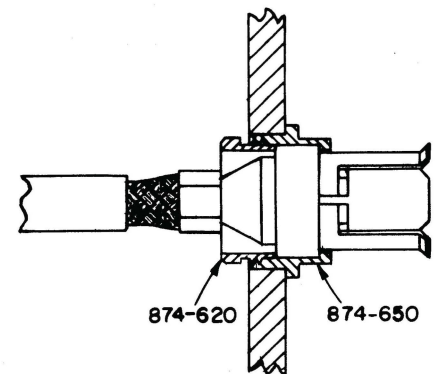
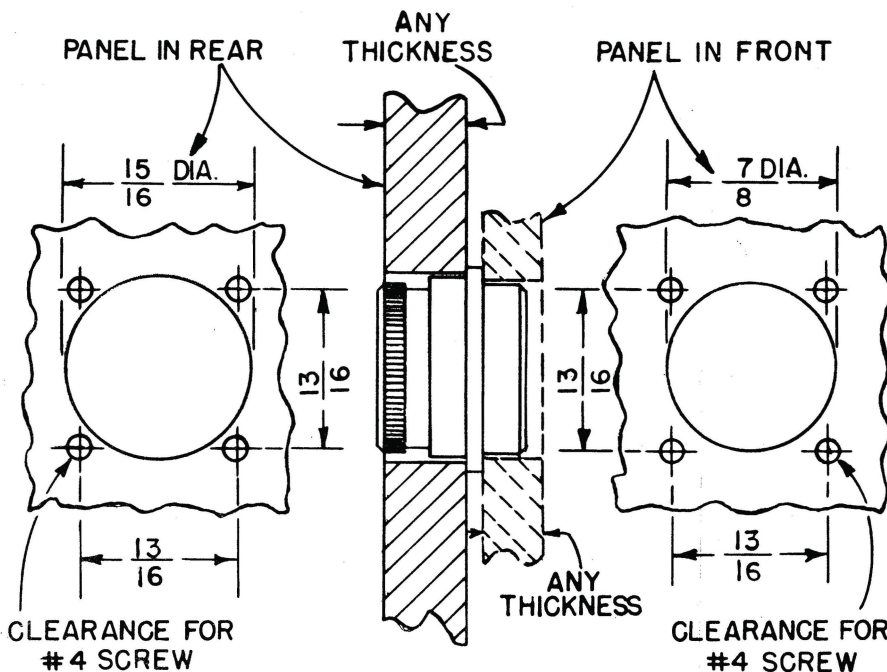


**ASSEMBLY INSTRUCTIONS GENERAL RADIO
TYPE 874-PB, -PB8, or -PB PANEL CONNECTOR**

Mount panel adaptor through 15/16-inch (panel in rear) or 7/8-inch (panel in front) clearance hole as shown in the diagram, using four #4 screws provided.

Remove knurled retaining nut and slide this nut back over cable. Then assemble connector to cable the same as Type 874-C, -C8, or -C9 but less rubber cord guard.

Slide connector assembly into the panel adaptor as far as it will go. Take care that the Type 874 Connector is properly oriented so that the panel adaptor tooth engages the groove on the side of the cable connector. Tighten up knurled retaining nut (see diagram).



Form 703-H
May, 1957

U. S. Patent No. 2,548,457
Printed in U.S.A.

GENERAL RADIO COMPANY
CAMBRIDGE • MASSACHUSETTS
New York Philadelphia Los Angeles
Chicago Washington San Francisco