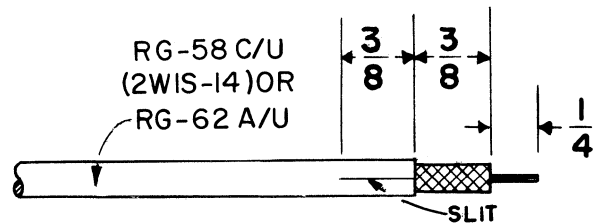


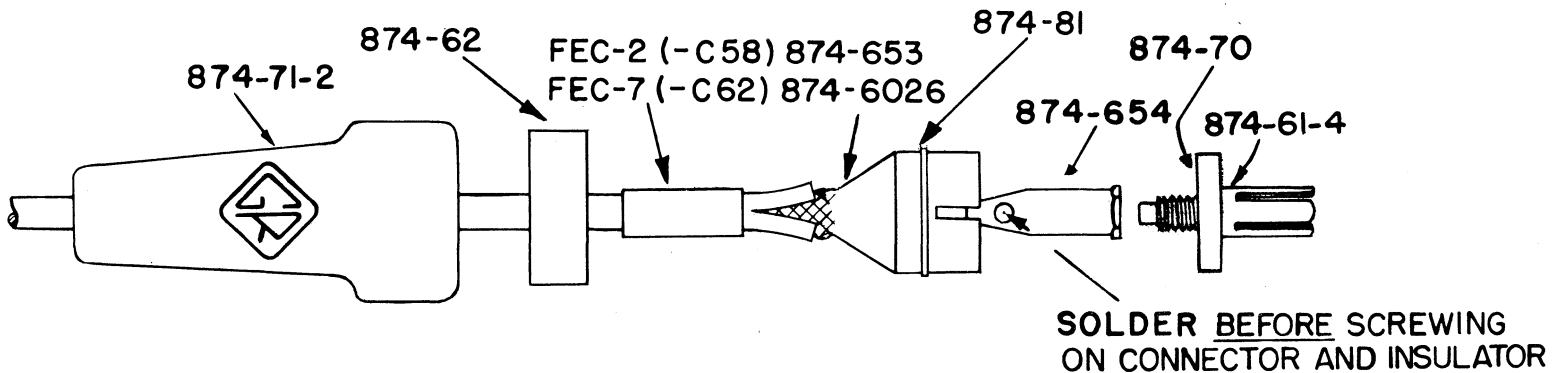
ASSEMBLY INSTRUCTIONS FOR GENERAL RADIO TYPE 874-C58 OR TYPE 874-C62 CABLE CONNECTOR

Remove cable jacket and insulation to expose braid and inner conductor to dimensions shown. Slit cable jacket as shown.



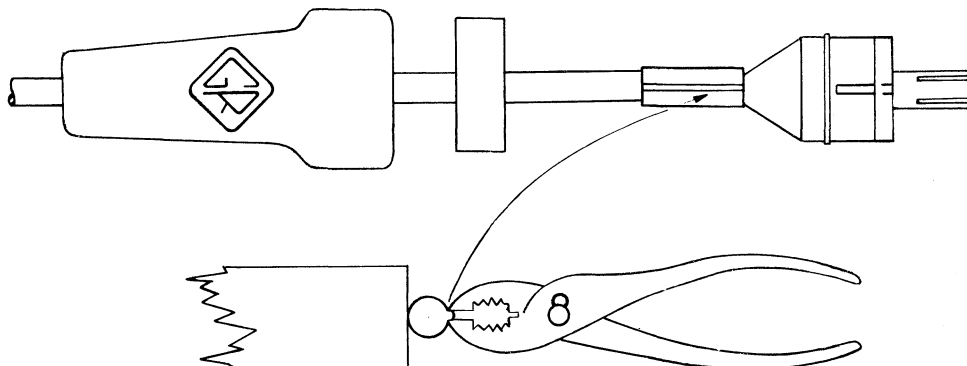
Slip on cord guard (874-71-2) using talc if necessary, coupling nut (874-62) and cable ferrule (FEC-2 or FEC-7). Slide outer transition piece (874-653 or 874-6026) under braid as far as possible. Slip inner transition piece

(874-654) over inner cable conductor until end touches cable insulation, then solder. Install snap ring (874-81). Insert inner conductor (874-61-4) in insulating bead (874-70) and screw into inner transition piece (874-654).



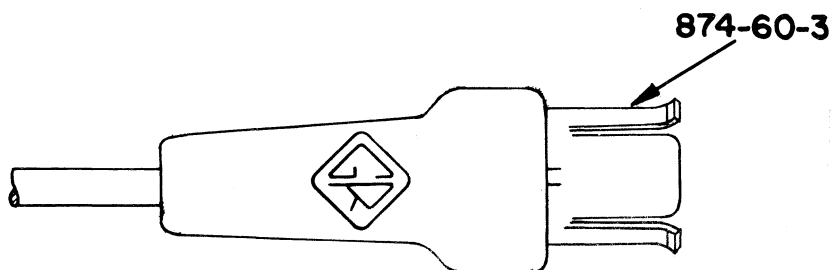
Slide outer transition piece (874-653) up to insulating bead (874-70), align keyways, and arrange braid over small end. Cover with cable ferrule and crimp in place. Crimping can be easily accomplished by holding ferrule against a sturdy surface and pinching and pushing simultaneously with a pair of ordinary gas pliers as illustrated.*

*Thomas and Betts Type WT-209 Ferrule Crimping Tool can be used for crimping ferrule on 874-C58 connectors. With this tool crimp the ferrule twice, once over the knurled end of the transition piece and once over the jacket. Leave a 1/16" gap between crimps. This tool is available from Thomas and Betts Co., Elizabeth, N. J.



Slip outer conductor (874-60-3) over bead (874-70) and outer transition piece so that keys engage keyways.

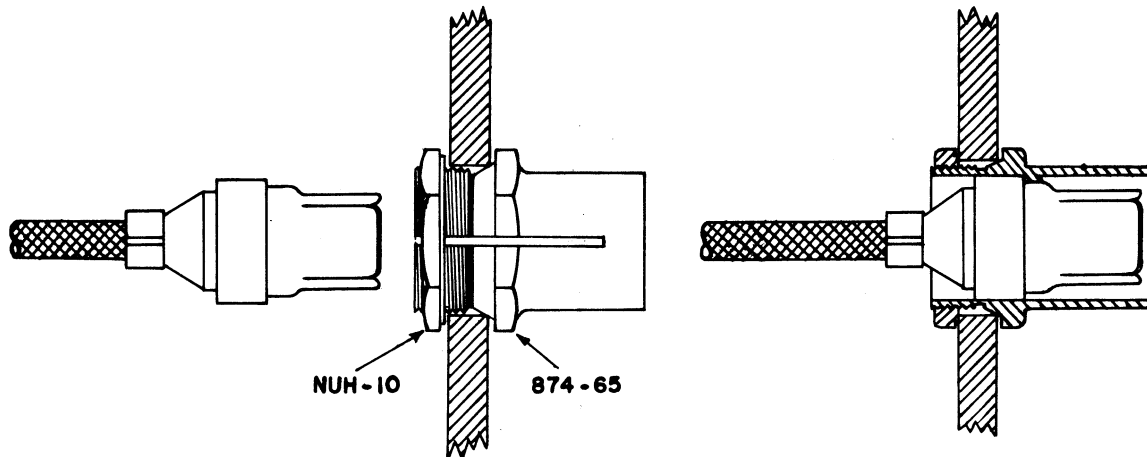
Thread up coupling nut (874-62), and stretch rubber cord guard (874-71-2) over coupling nut (874-62).



ASSEMBLY INSTRUCTIONS FOR GENERAL RADIO TYPE 874-P58 OR TYPE 874-P62 PANEL CONNECTOR

Assemble connector to cable same as Type 874-C58 or Type 874-C62 but less rubber cord guard. Mount panel adaptor (874-65) through 15/16-inch clearance hole in panel, leaving nut (NUH-10) loose.

Slide connector assembly into panel adaptor until pierced key engages keyway in connector assembly. Clamp in place by tightening nut (NUH-10).



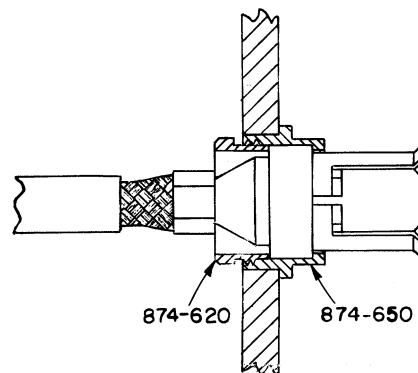
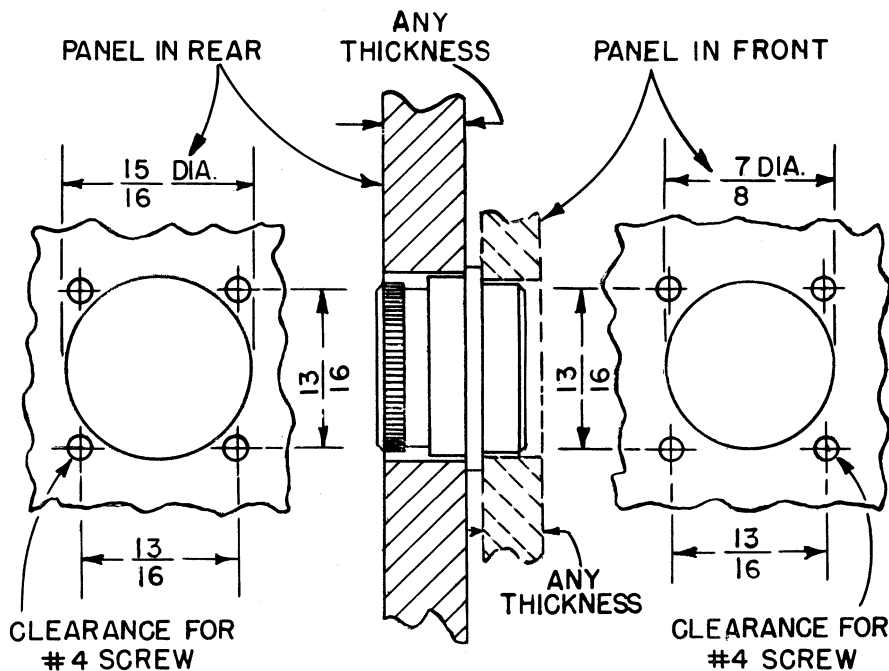
ASSEMBLY INSTRUCTIONS

GENERAL RADIO TYPE 874-PB, -PB8, -PB58, or -PB62 PANEL CONNECTOR

Mount panel adaptor through 15/16-inch (panel in rear) or 7/8-inch (panel in front) clearance hole as shown in the diagram, using four #4 screws provided.

Remove the knurled retaining nut and slide this nut back over the cable. Then assemble connector to cable the same as Type 874-C, -C8, -C58, or C-62 but less rubber cord guard.

Slide connector assembly into the panel adaptor as far as it will go. Take care that the Type 874 Connector is properly oriented so that the panel adaptor tooth engages the slot on the side of the cable connector. Tighten up knurled retaining nut (see diagram).



Form 779-D

U. S. Patent No. 2,548,457
Printed in U.S.A.

GENERAL RADIO COMPANY
CAMBRIDGE • MASSACHUSETTS
New York Philadelphia Los Angeles
Chicago Washington San Francisco